

Sustainability Incentive Program

Standard inclusion



FENCING AND WATERWISE FRONT LANDSCAPING

All Botania Park homes will receive fencing and waterwise front landscaping ensuring streetscapes flow naturally into one another and reflect the lush canopy of surrounding trees.

Woodland Grey Colorbond fencing will be installed to the side and rear of the property, providing a style appropriate to the design of the home and its streetscape.

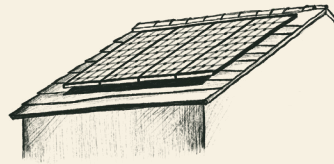
Waterwise front landscaping will include native plants and suitable groundcover materials at the front of homes.

Fencing and landscaping will be supplied through Botania Park's appointed landscape contractor.

Your choice

Select from one of the below.

CHOICE A



HOME BATTERY PACKAGE

Receive a contribution towards the installation of a home battery system, in addition to the current \$5,000 WA Residential Battery Scheme, that helps power your home sustainably.

\$4,500
value

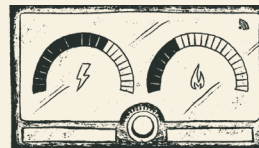
Why choose a home battery system?

- Lower your energy bills.
- Store your solar power to use day or night.
- Reduce your carbon footprint.
- Be prepared for energy outages.

Eligibility requirements*:

- Solar panels must have a minimum capacity of 45 kW.
- The battery must have at least 8 kWh of storage and 25 kW of power output.

CHOICE B



ALL-ELECTRIC PACKAGE

Receive a contribution towards the installation of a heat pump water system or solar hot water system with an electric booster.

\$3,000
value

Why go all-electric?

- Cleaner, quieter, and more efficient than gas.
- Supports a healthier, zero-emissions lifestyle.
- Designed for comfort and performance year-round.
- A smart step toward future-proofing your home.

DISCLAIMER: This document is presented for information and advertising purposes only and Botania Park is not responsible or liable for the adequacy, accuracy, or completeness of the information herein. Botania Park may, at any time, amend or replace any information in this document without notice. Any inclusion, offer, package, upgrade, or service described in this document is subject to formal documentation and cannot be relied upon. This information has been prepared as of 11.08.25 and may not be current at any time after that date. *Please see Annexure 3 of your contract of sale for further details. Solar & Home Battery Package contribution is in addition to the WA Residential Battery Scheme.

Email sales@botaniapark.au for more information.

botaniapark.au

HESPERIA